



**ENGAGING
AND
CREATIVE**

**WORKSHOPS, RESIDENCIES
EVENTS AND EXPERIENCES**

**DARWIN NORDIN
ARTIST / DESIGNER**

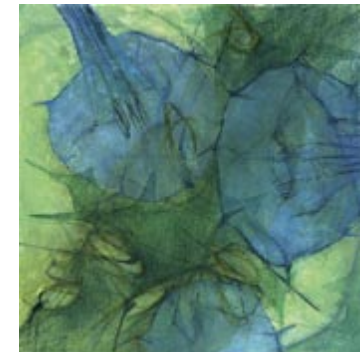
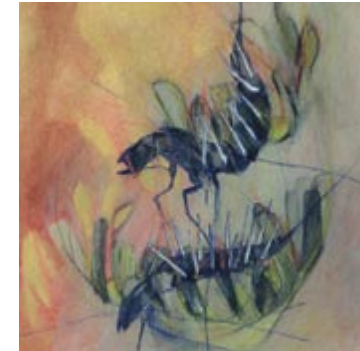
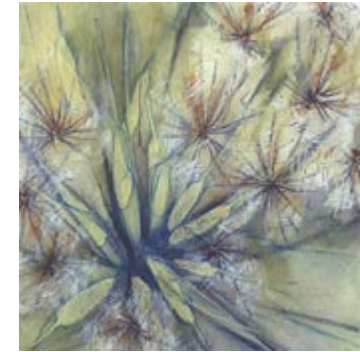


Darwin Nordin is an Artist and Designer from Seattle. His sculpture and drawings have been exhibited throughout the US. He has completed a number of commissioned works and his drawings received the Armand Hammer Award of recognition in 1988. His garden design work has been featured in a national garden magazine.

Darwin's art reflects his interest in the structure and intricacies of the natural world. The forms and images he creates develop out of a generative process. His pieces evolve through a series of constructive and deconstructive phases that brings him closer to the generative rhythms and mysteries found in nature.

Darwin is an energetic Teaching - Artist who has spent 20 years providing art experiences to a wide variety of audiences. He has worked with children of all ages, adults, the elderly and many special populations. He has designed and facilitated many experiences and projects that are unique and often of a scale and scope that goes far beyond the typical table-top art project.

Darwin's teaching philosophy and mission is centered around a belief that the arts represent a 'core' or 'root' language that contributes to a generative and restorative power in the world. His goal, as an arts educator, is to immerse students in the language and history of the arts, to engage them in the creative process, provide them with opportunities for creative self-expression and avenues to share their visions and dreams with others. Quite simply, he wishes to challenge and enrich their understanding of art as well as the world around them. Preparing them to become excited, energized and confident about their creative powers: to process and explore, imagine and dream, problem solve and grow a rich and meaningful life.



A few of Darwin's paintings



"I want students to become excited, energized and confident about their creative powers to explore, imagine and dream a rich and meaningful life."



Professional affiliations include:

WASHINGTON STATE ARTS COMMISSION 1999-2005
MUSEUM OF GLASS, Tacoma WA 2001-2005
WASHINGTON MIDDLE SCHOOL, Yakima WA 2000-2005
CARL SANDBURG ELEM. SCHL., Kirkland WA 2000-2005
SALINA ARTS COMMISSION, Salina KS 2000-2001
TEAM CHILD, Seattle WA 2000
EXPERIMENTAL GALLERY, Seattle WA 1995-1999
THE CHILDREN'S MUSEUM, Seattle WA 1989-2000
TACOMA PUBLIC SCHOOLS, Tacoma WA 2000-2002
KING COUNTY ARTS COMMISSION 1997,98,2002
BELLEVUE HIGH SCHOOL, Bellevue WA 1997-1999
SEATTLE ART MUSEUM, Seattle WA 1990
NEO ART SCHOOL, Seattle WA 1989
SCRIPP'S COLLEGE Claremont CA 1987-1988
ROCHESTER ART CENTER, Rochester MN 1982-1986
ROCHESTER COMMUNITY COLLEGE 1985-1986
UW LACROSSE, Lacrosse WI 1983



Darwin has experience in private and public schools — K-12, as well as in universities and community colleges. He has designed museum exhibits and environments and has provided exhibit-specific educational programming, workshops and experiences for various museums and art centers.

He has woven arts education into a wide variety of curriculum areas and has collaborated with artists and professionals across diverse disciplines. His workshops and residencies provide experiences and insight into the important connection the arts have to the world around us.

Darwin has provided a number of school districts with teacher training and curriculum development that has aided them in aligning curriculum and teaching practices with State and National Academic Learning Standards for the Arts.

Teacher's and program coordinators have described Darwin as being;
'A natural teacher', 'Inspirational', 'A Good Collaborator',
'A true mentor for many of our students.'

CLASSES, WORKSHOPS AND RESIDENCIES

Darwin has designed and facilitated workshops and residencies for grades K-12. Much of the Art curriculum he has designed and modeled has strong integrated learnings in Science, Math, Language Arts and Social Studies. Creative dramatics, movement and writing are often a part of his teaching methods.

TEACHER WORKSHOPS / PROFESSIONAL DEVELOPMENT

Designed to inspire and motivate teachers through experiences that help them 'See', 'Imagine' and 'Invent' new ways of presenting Art curriculum or integrating art based projects into other curriculum areas. Teachers gain confidence and experience using visual art materials and techniques that are easily accessible. Teachers are guided through experiences that are two and three-dimensional and introduced to Art History in ways that demonstrate how to make it a fun, entertaining and valuable component of lessons across the curriculum.

TEACHER WORKSHOPS PROVIDE

- Brainstorming and assistance designing and developing curriculum
- Help establishing course objectives and target learnings
- Hands on technical information and guidance
- Experience and practice with art materials and techniques
- Bibliographies and lists of references and resources
- Arts integration and cross-curriculum connections
- Help identifying community art resources
- Assistance aligning projects to the State and National Learning Standards in the Arts

Workshops devoted solely to promoting creative thinking and creative self-expression are also available.

CLASSES AND WORKSHOPS OFFERED IN ART TECHNIQUE / ART MEDIUMS

Drawing and Painting
Collage and Assemblage
Kite Making

Papermaking and Bookmaking
Wood Sculpture Techniques
2-D and 3-D Design

Modeling and Casting
Printmaking
Paper Engineering





SOME OF THE WORKSHOPS AND RESIDENCIES DARWIN OFFERS

These are grouped into general categories that express some of Darwin's interests and expertise. Most have been adapted and field-tested with students grades 3-12, Some with even younger audiences. All classes and residencies involve students in an engaging and creative, sequential exploration of the topic(s) while teaching them the vocabulary, principles and practices of the visual arts.

— THE LANGUAGE OF ART —

The Character's and Players in a Work of Art
Constructing and Deconstructing Art History
Color Stories

Beyond The Painting
Shape to Form
Walk The Line

— ARCHITECTURE AND ENGINEERING —

Automata and Gizmos
Cut, Fold and Form
Imagineering

Pop-Ups and Paper Engineering
Line to Plane - Plan to Model
The Geometry of Pattern

— NATURE AND ENVIRONMENTAL STUDIES —

Botanical Structures
Ephemeral Alterations/Installations
The Geometry and Poetry of Place
Nature Inspired—Art Nouveau, Art Deco
Precious Resources—a Diorama Challenge

Pattern and Structure from Hidden Worlds
Insect Marvels
Procession of the Species
Nature Printing-Picture Poems
Explorer's Journals

— THE GRAPHIC WORD / TYPOGRAPHY AND WORD PLAY —

Illuminated Manuscripts
Image Text Tumble
The Shape of Language-The Language of Shape

Symbol Paintings - Pictographs
Concrete Poetry

— STORYTELLING —

Tricksters and Transformers
Stop-Action Animation
Mind-Movies

Pourquoi Tales
Story-Shrines
Three-Sentence Paintings

Requests for custom designed projects and curriculum are welcome and encouraged.
For more specific descriptions and fees please contact Darwin.
phone (206) 932-8660 or email darwin@sempervivus.com

FESTIVALS AND EVENTS

Collaborative art making is a great way to build community. Whether it's rallying around a cause, to create artwork to sell at a benefit auction, or create props and costumes for a parade or performance.

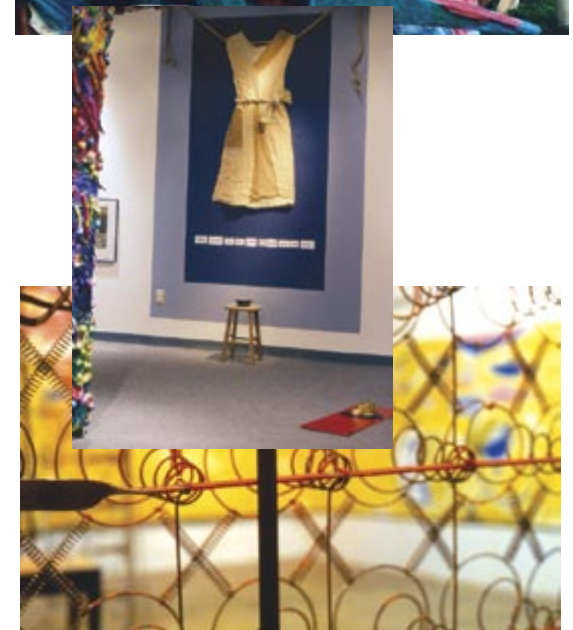
Darwin has designed and facilitated a number of large scale sculptures and installations that have been created by community groups at festivals or events.



EXHIBITS AND EXPERIENCES

Darwin has been involved in the design and creation of many interactive exhibits, environments and experiences that foster inquiry and exploration, understanding and questioning.

Many exhibits have been created by youth under his guidance. These exhibits and events have provided important opportunities for youth to express themselves, gain a greater sense of self-confidence and contribution to a community.



CREATIVITY

COLLABORATION

IMAGINATION

INVENTION

DISCOVERY

OBSERVATION



EXPRESSION



art and design

SEMPERVIVUS LLC

206.932.8660

darwin@sempervivus.com

www.sempervivus.com

If you are interested in scheduling a residency or working with Darwin to bring an artist's - eye to a project, event or activity you are planning, contact him at the phone number or email listed above.